

PGR induction

02 October 2024 2pm



ROYAL
HOLLOWAY
UNIVERSITY
OF LONDON

Professor Dawn Watling

Associate Pro-Vice Chancellor (Postgraduate Research)



ROYAL
HOLLOWAY
UNIVERSITY
OF LONDON

Welcome to the Doctoral School

Nisha Patel, Doctoral School Manager



ROYAL
HOLLOWAY
UNIVERSITY
OF LONDON

Doctoral School Administration Team



ROYAL
HOLLOWAY
UNIVERSITY
OF LONDON



Nisha Patel

Doctoral School Manager



Laura Christie

Doctoral School Training &
Development Manager



Janet Heaney

Doctoral School Recruitment &
Scholarships Manager



Ian Barber

Doctoral School Data, Records &
Fees Manager



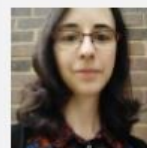
Laura Ventura Nieto

Doctoral School Programme
Administration Manager



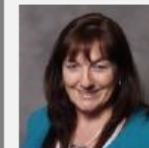
Elizabeth Jones

Doctoral School Recruitment &
Scholarships Officer



Ally Williams

Doctoral School Data, Records &
Fees Officer



Tracey Jeffries

Doctoral School Administration
Officer



Jo Barrs

Doctoral School Administration
Officer



Will Davidson

Doctoral School Administration
Assistant



Evelyn Dunning

Doctoral School
Administration Assistant



Laura Shoulder

Doctoral School Communications
Officer

Doctoral School team

- The team consists of 18 members of staff, each with their own areas of expertise.
- Each academic School has its own School Liaison staff member from within the Doctoral School team who supports the School's Staff-Student Action Meetings, School events and School training courses.
- Want to contact a particular staff member / have a query about specific issue? Email into doctoralschool@royalholloway.ac.uk and your query will be triaged to the most relevant member of staff.
- Want to speak with a member of staff online or in person face-to-face? Make an appointment. Let us know what your query is about and the most relevant member of staff will arrange to meet with you via MS Teams or at the Helpdesk in Founder's South Tower : royalholloway.ac.uk/doctoral-school/appointment-request.aspx

The different roles of a PGR student

Researcher

As a researcher, you belong to your department and have your **supervisory team** as your key contact and support

Student

The **Doctoral School** provides a centre of PGR expertise to support you through your student journey from induction through to award

Staff member

As a member of teaching staff, your key administrative support will come from your **academic school**

How can the Doctoral School help you?

- 1. Provides centre of expertise to advise and support you on non-academic issues throughout your student journey e.g., queries on**
 - Student record – enrolment / interruptions / change of mode
 - Progression and award processes – annual review / upgrade / exam
 - Funding – fees and studentship
 - University regulations and Code of Practice for PGR students
- 2. Provides support with document requests e.g.**
 - Student Status Certificate (if you're not able to download it)
 - confirmation for your railcard application
- 3. Provides generic skills training for PGR students:**
 - Researcher Development Programme

How can the Doctoral School help you? – ctd.

4. **Aims to foster a sense of community among PGR students across all disciplines:**

- PGR Peer Mentoring Scheme
- Alumni events
- Annual Doctoral School interdisciplinary conference - November

5. **Keeps you updated on news and events in the University of interest to PGR students:**

- Fortnightly Researcher Newsletter
- Doctoral School microsite: royalholloway.ac.uk/doctorsal-school/home.aspx
- Twitter - @RHULDocSchool
- LinkedIn

6. **Acts as link to support services and Professional Service teams who deal with PGR students e.g.:**

- Wellbeing / International Student Support Office / Library / SU

Contact the Doctoral School

Email us:

doctoralschool@royalholloway.ac.uk
pgrtraining@royalholloway.ac.uk (RDP queries only)

Phone us:

01784 276886

Visit our Helpdesk
in Founder's
South Tower

The Helpdesk in S-105 is open on Tuesdays for drop in general queries. See opening times at:
royalholloway.ac.uk/doctorsal-school/doctorsal-school-helpdesk.aspx

Online Helpdesk:

Make an online appointment to speak with a specific team member: royalholloway.ac.uk/doctorsal-school/appointment-request.aspx

Visit our
webpages:

- royalholloway.ac.uk/doctorsal-school/home.aspx
- royalholloway.ac.uk/doctorsal-school/quick-links/a-to-z-for-pgrs.aspx

Remember...

- As a PGR student, your studies are not bound by the University term dates.
- You are entitled to take up to take 8 weeks of holiday every 12 months of registration.
- These include bank holidays, weekends and University closure dates.
- You should notify your supervisor in writing of any holiday you plan to take. Do this in advance.
- More information can be found in the [Code of Practice for Research Degree Students and Supervisors](#)

What's next?

Look through the Start of Session Guide for new PGRs

royalholloway.ac.uk/doctorsal-school/welcome-to-new-students.aspx

- make sure that you have completed enrolment for 2024/25
- attend the other PGR induction events and view our range of induction videos and presentations from central University services
- read the 2024/25 PGR student handbook
- meet with your supervisor and send your supervisory team arrangement form to the Doctoral School