

Health, the Human Body and Behaviour



‘H2B2’



George Dickson

Professor of Molecular Cell Biology

UK MDEX consortium

UK HIV-Vaccine consortium

EU Clinigene Network of Excellence

European Society of Gene & Cell Therapy

British Society for Gene Therapy

European Medicine Agency

EU, MDC, Gates Foundation, Wellcome

Mark Exworthy

Professor of Health Policy & Management

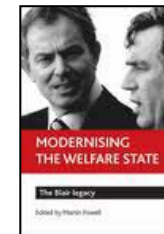
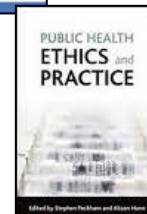
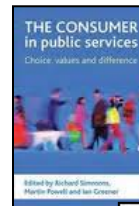
ESRC

NHS (Dept of Health and NIHR)

Joseph Rowntree Foundation,

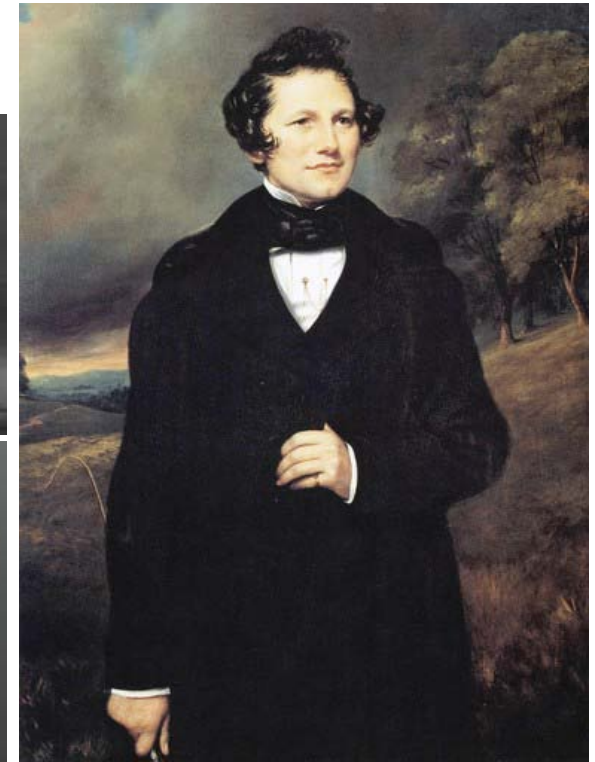
NHS Confederation

Commonwealth Fund of New York



Thomas Holloway (1800-1883) – Our Founder

- Thomas Holloway built Royal Holloway, University of London as a “gift to the nation”
- The sales of his products made Holloway a multi-millionaire.
- one of the richest men in Britain at the time.
- Holloway's products were said to be able to cure a whole host of ailments!
- Scientific evaluation after his death showed that few of them contained any ingredients which would be considered to be of significant medicinal value.



Holloways Pills → Beechams Pills → Smith Kline Beecham → Glaxo SmithKline

Health, the Human Body & Behaviour (H2B2)

RHUL has leading researchers **across** several disciplines asking questions such as:

- How to improve **systems and organisations for healthcare delivery** of in the 21st century?
- How does **society and culture** shape attitudes towards health?
- How do **behavioural variations** among individuals and populations impact on their health status?
- How can **cognitive deficits and quality of life** be understood, measured and managed in long term conditions, such as multiple sclerosis, macular degeneration, dementia and in chronic pain?

Health, the Human Body & Behaviour (H2B2)

RHUL has leading researchers **across** several disciplines asking questions such as:

- How can advances in **molecular genetics and gene therapy** lead to successful treatments for diseases such as muscular dystrophy, spinal muscular atrophy, Parkinson, motor neuron disease and spinal injury?
- How can we develop **newer and safer drugs** for neurological diseases like epilepsy, bipolar disorder, and Alzheimer disease?
- How can **new vaccine systems and antibiotics** be developed to counter emerging global healthcare problems like tuberculosis, HIV-AIDS and multiply-resistant pathogens?
- Research grants and contracts:
 - £15,246,000 for 2010/11
 - £14,451,000 for 2011/12
 - **School of Biological Sciences ranked 3rd in UK**
 - **Department of Psychology ranked joint 5th in UK**
 - **School of Management in top 20 in UK**

But there is surely more?.....

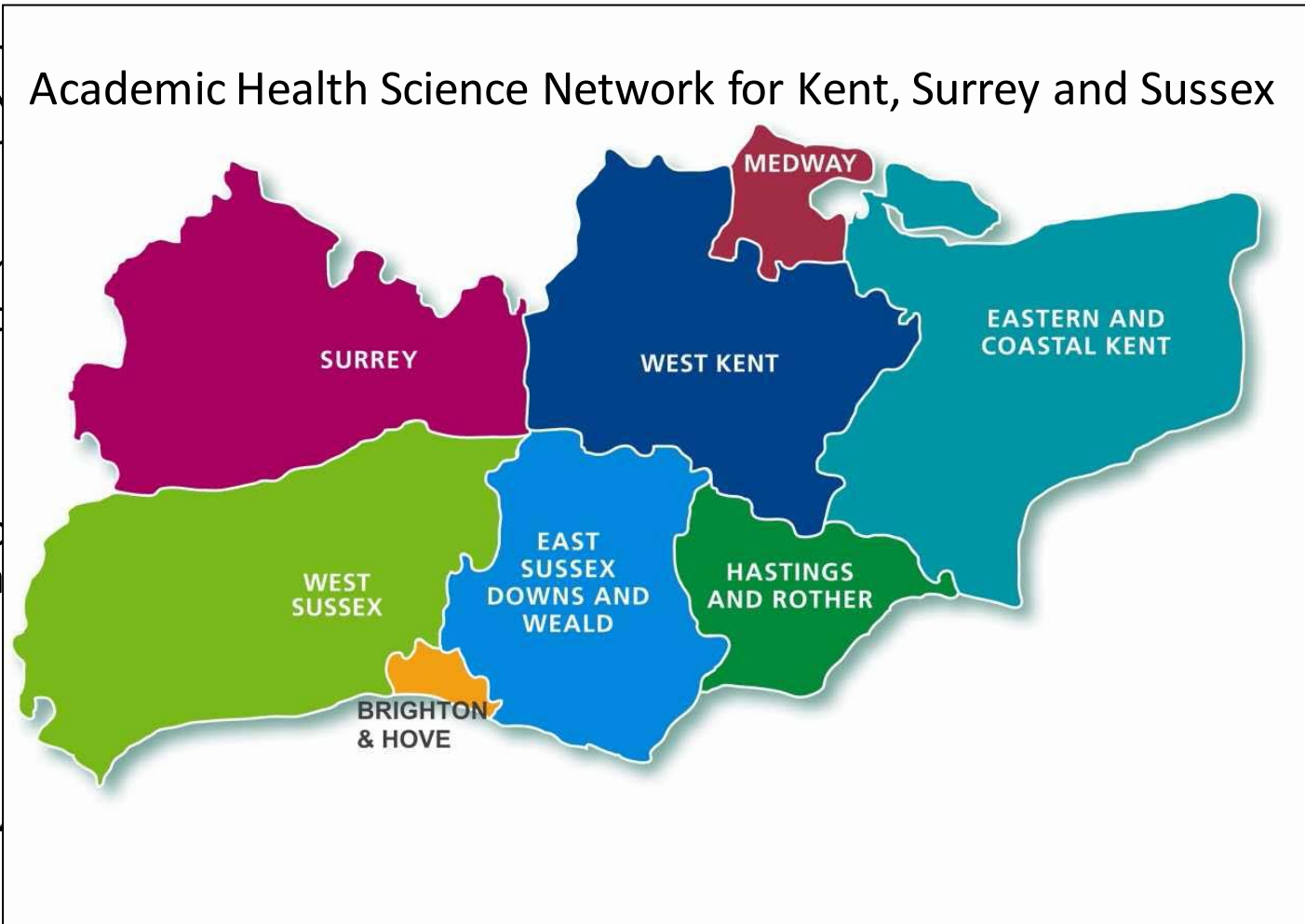
- Healthcare practice, management and informatics (Management, Economics, Maths, ISG):
Health economics; knowledge mobilisation and change in health; health education; informatics and security of health and genetics data.
- Translational biology and therapy for human diseases (Biosciences, Physics and Computer Sciences):
Gene and cell therapy; rare inherited diseases; muscle and nerve function; infection and immunity; embryonic development; biodiagnostics, and nanotechnologies; food safety.
- Behavioural psychology and sociology (Psychology, Social Sciences, Geography):
Clinical and health psychology; brain function and cognition (sensation, perception, motor behaviour); social behaviour in health and disease; cultural geography.

Benefits to RHUL.....

- Present a strong external face for RHUL – help potential interactions with the NHS, NIHR, DoH, RCUK, Wellcome Trust, Medical Research Charities, quasi-government agencies and industry (local, national and multi-international).
- Bring researchers together, foster interdisciplinarity and knowledge transfer, build critical mass and “status” - reach out to local healthcare providers, industry, government agencies, other HEIs and HEI-related organisations.
- Provide spokespersons and enablers to facilitate research collaboration and development activities, optimise internal and external partnerships and co-ordinate joint academic seminar and workshop programmes.
- Increase income generation and research productivity.
- Offer wider opportunities for students.

Benefits to RHUL.....

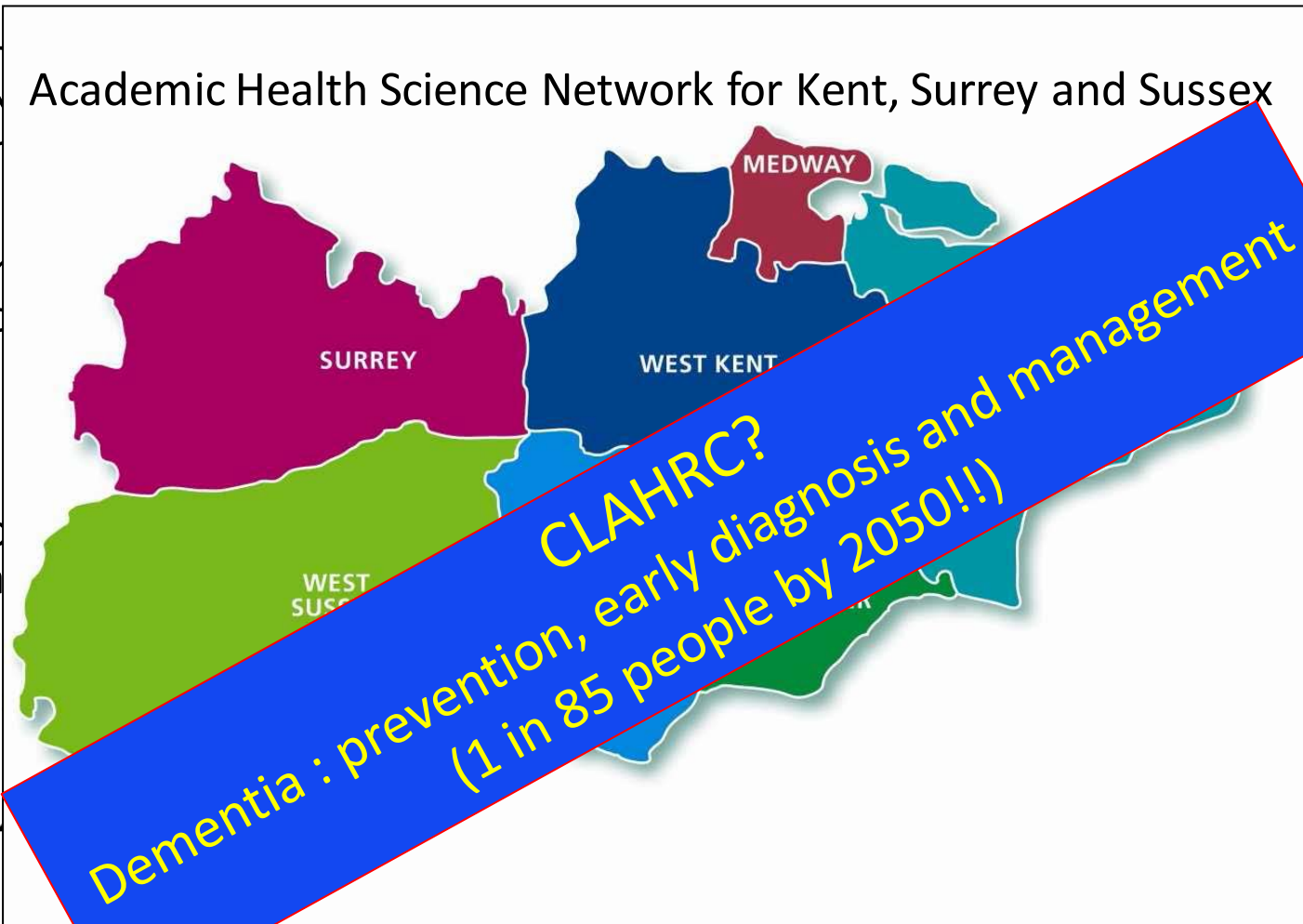
- Preserve NHS, National government
- Bring research build industry
- Provide development ordinary
- Increase
- Offer v



with the
national).
transfer,
s.
and
co-

Benefits to RHUL.....

- Present to NHS, National government
- Bring research build capacity industry
- Provide development ordinary
- Increase
- Offer value



with the
national).
fer,
S.
and
co-

Benefits to RHUL.....



- Offer v

Involve all 3 RHUL Faculties

sex
with the
asi-
nal).
nsfer,
s.
and
o-

Potential Activities???.

- Internal launch: structures and information
 - Liaise with departments/ Set up a website
 - Hold an introductory H2B2 workshop with social event
 - Advertise and fill RHUL research theme PhD studentship
 - High profile inter-disciplinary seminar and workshops
- External launch: liaison with and recruit external partners
 - Academic and research links with Local NHS (eg ASPH joint appointments)
 - National Institute for Health and Clinical Excellence.
 - LCRNs, AHSN s, CLAHRCs (Clinical Trials and Health Service Research)
 - Research Councils and medical funders
 - Pharma and Biotech, and Venture Firms.
 - Quasi-governmental agencies eg AHVLA, LGC, NPL, CABI, Lilly, P&G, etc
- Identify and populate 3 or 4 `H2B2 Hubs' of translational or interdisciplinary excellence.
 - Eg. Institute of Advanced Therapies (in Gene and Cell Therapy)

H2B2 : Our Approach and Aims

- Help to foster conditions for more high quality research
- Promote translational research which makes an impact
- Engage with relevant internal and external parties and enhance partnership and development activities
- Be inclusive → ensure no-one is overlooked
- Support grass-roots → enhance existing high quality research
- Be collaborative → foster new research collaborations across campus

Get Involved?.....

If you have any ideas for activities, want to comment, or are looking for a collaborator, or need some resourcing, please contact:

- Professor George Dickson, School of Biological Sciences:
G.Dickson@rhul.ac.uk
- Professor Mark Exworthy, School of Management:
M.Exworthy@rhul.ac.uk
- The H2B2 web site is under construction....
 - Send us your profile!
 - Send us your comments and advice!
 - Send us your ideas!
 - Ask for our help or input or some (small) seed funding?

