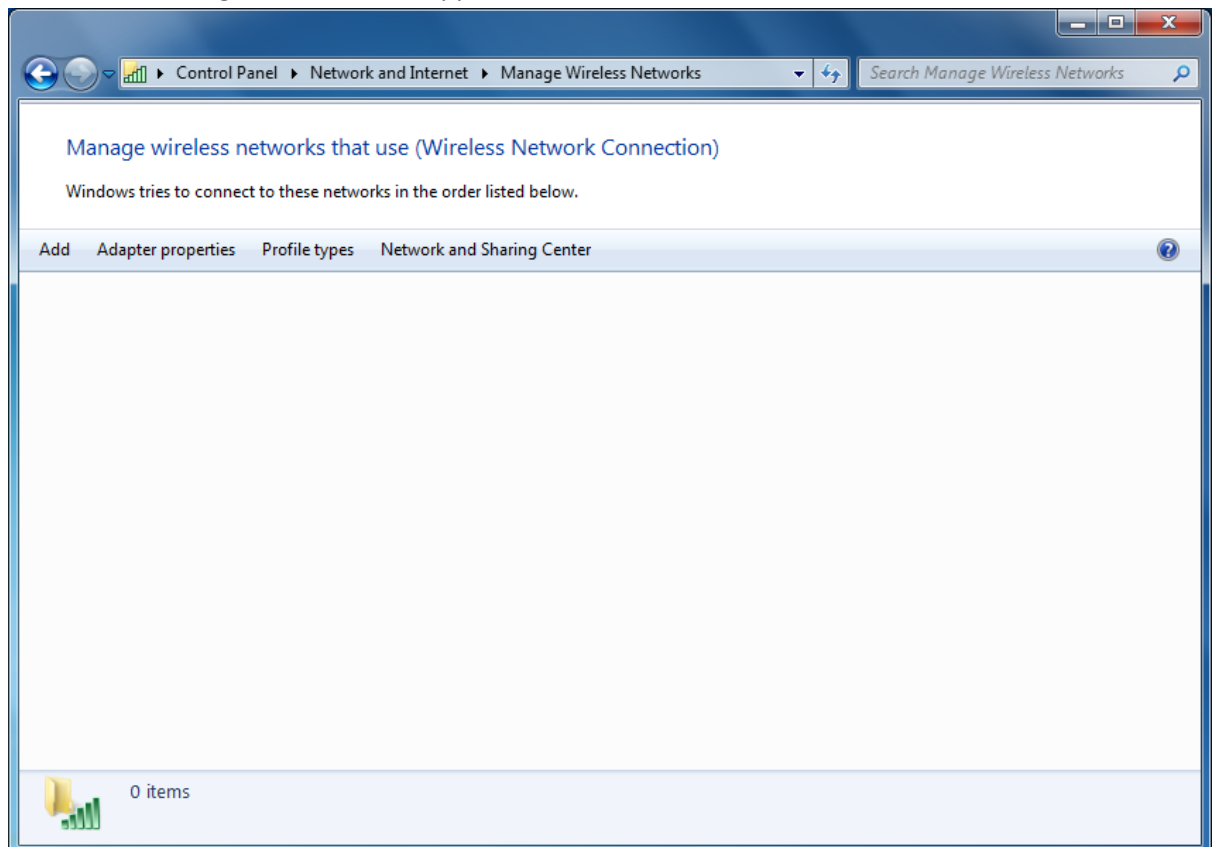


Part 1: Setting Up Eduroam (Windows 7)

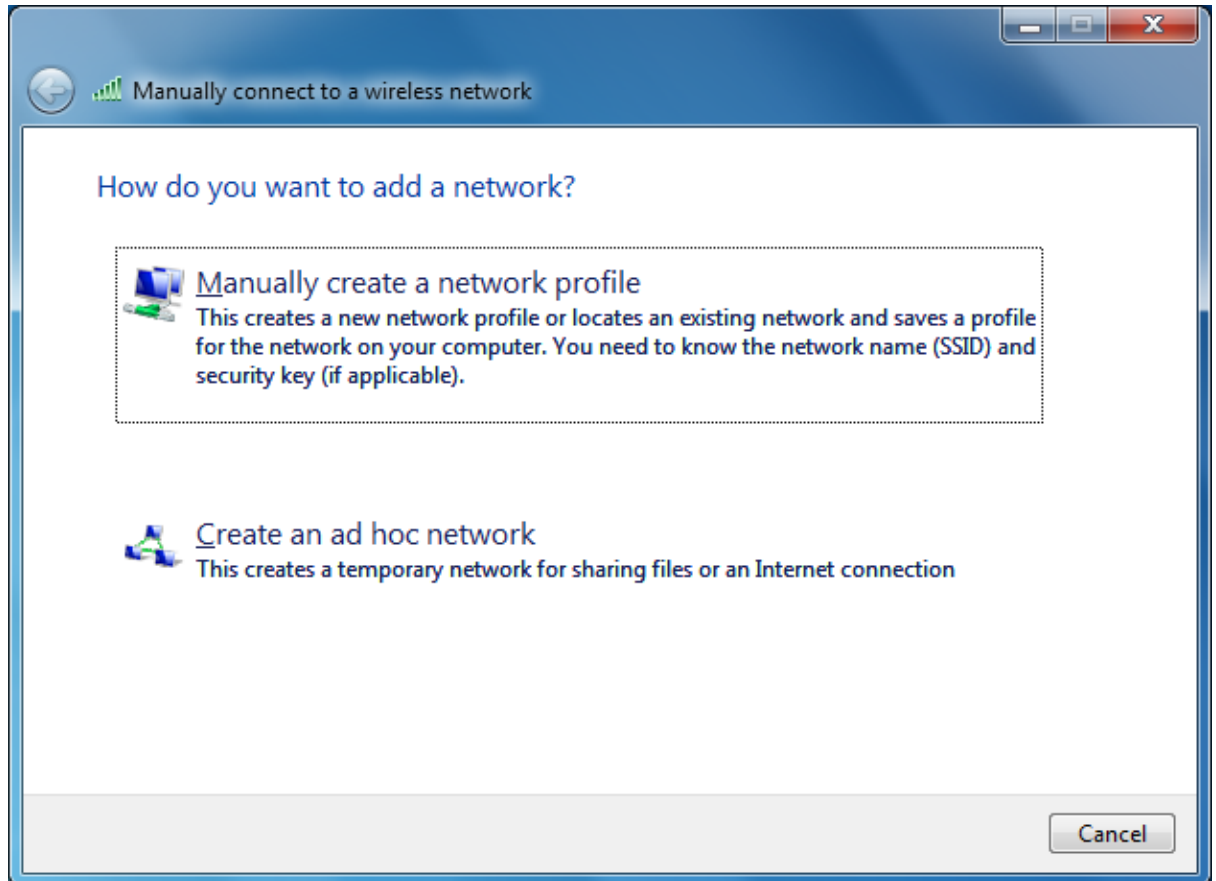
Firstly: Check your wireless adaptor is turned on.

1. Click on the Start button.
2. Now click on the Control Panel icon.
3. Click on the Network and internet icon or Network and Sharing Centre icon. (If this does not appear, click Control Panel Home on the left-hand menu bar)
4. Now click on the Network and Sharing Centre icon (if you haven't already). A screen appears offering a number of options on the left-hand side: click on Manage Wireless Networks.

Then the following window should appear:



5. Click the Add button and you will see this window appear:



6. Click Manually create a network profile.
7. In the 'Network name box' type "eduroam".
8. 10. From the 'Security type drop-down list', select 'WPA-Enterprise'.
9. 11. Ensure the 'Encryption type' is set to 'TKIP'.
10. 12. Leave the 'Security Key/Passphrase' box empty.
11. 13. Tick the 'Start this connection automatically' box.

12. The 'Connect even if the network is not broadcasting' box should remain un-ticked. Once all these settings have been entered, it should resemble the image below:

Manually connect to a wireless network

Enter information for the wireless network you want to add

Network name: eduroam

Security type: WPA-Enterprise

Encryption type: TKIP

Security Key: Hide characters

Start this connection automatically

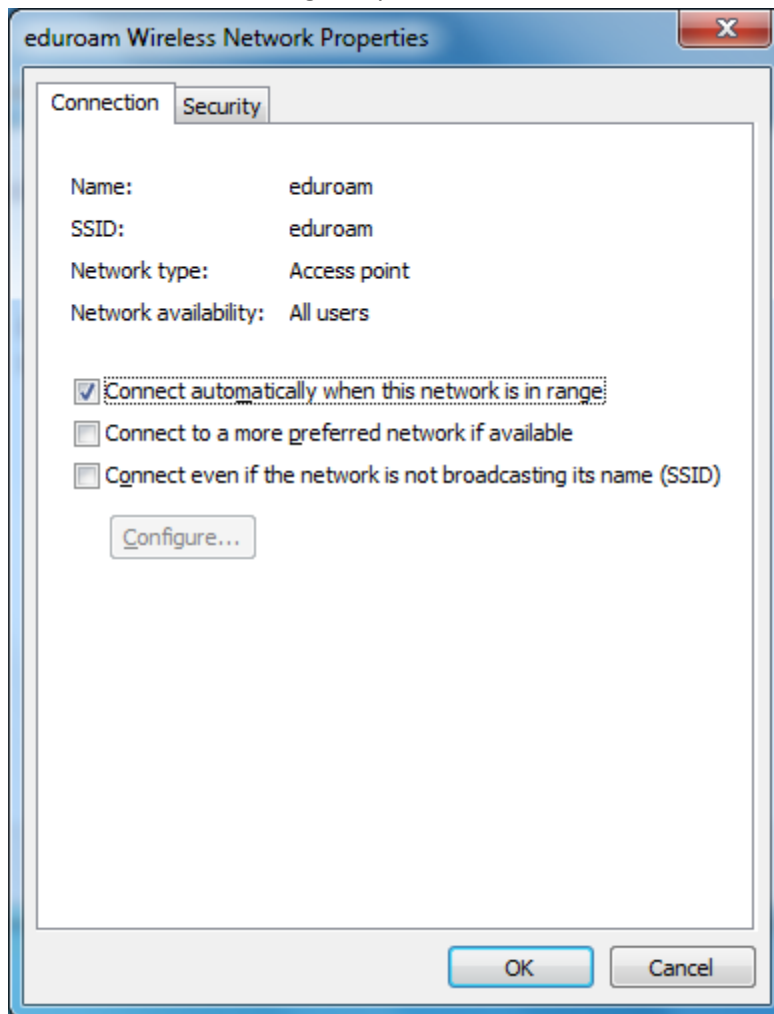
Connect even if the network is not broadcasting

Warning: If you select this option, your computer's privacy might be at risk.

Next Cancel

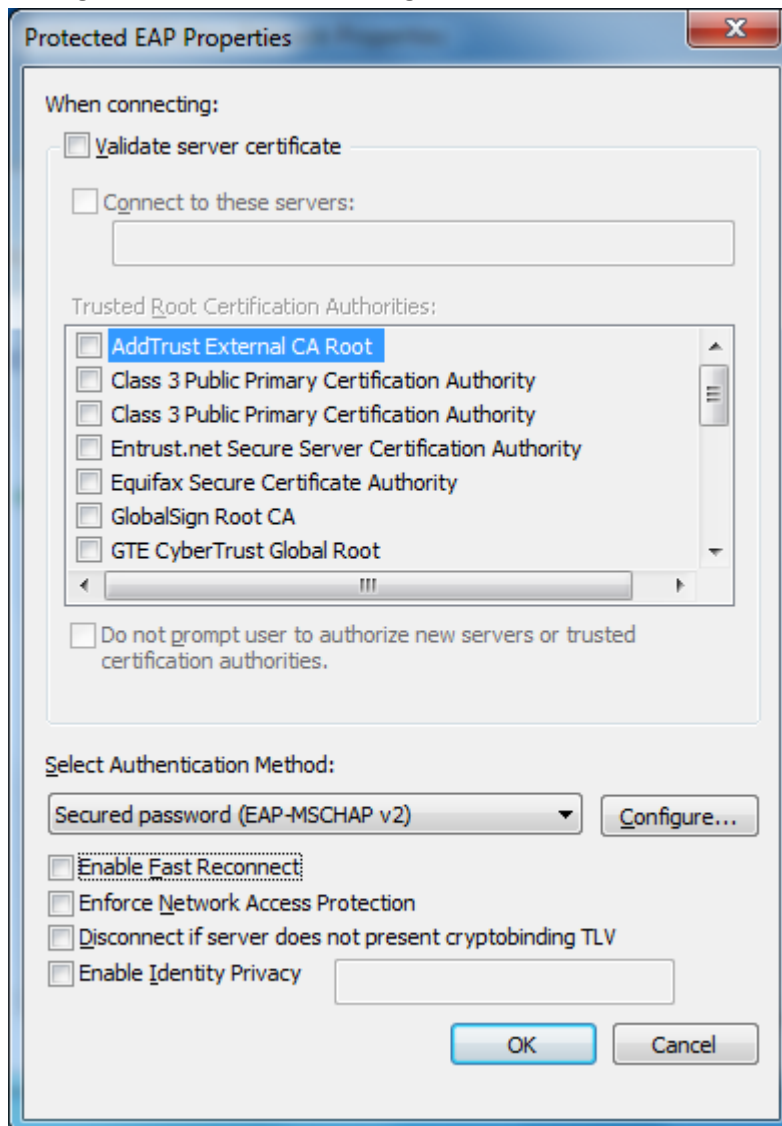
13. Click on the Next button at the bottom of the screen.
14. Click Change connection settings.
15. Tick the 'Connect automatically when this network is in range' box.
16. Ensure the 'Connect to a more preferred network if available' box is un-ticked.

17. Un-tick the 'Connect even if the network is not broadcasting' box. Again the image below should resemble the image on your screen:



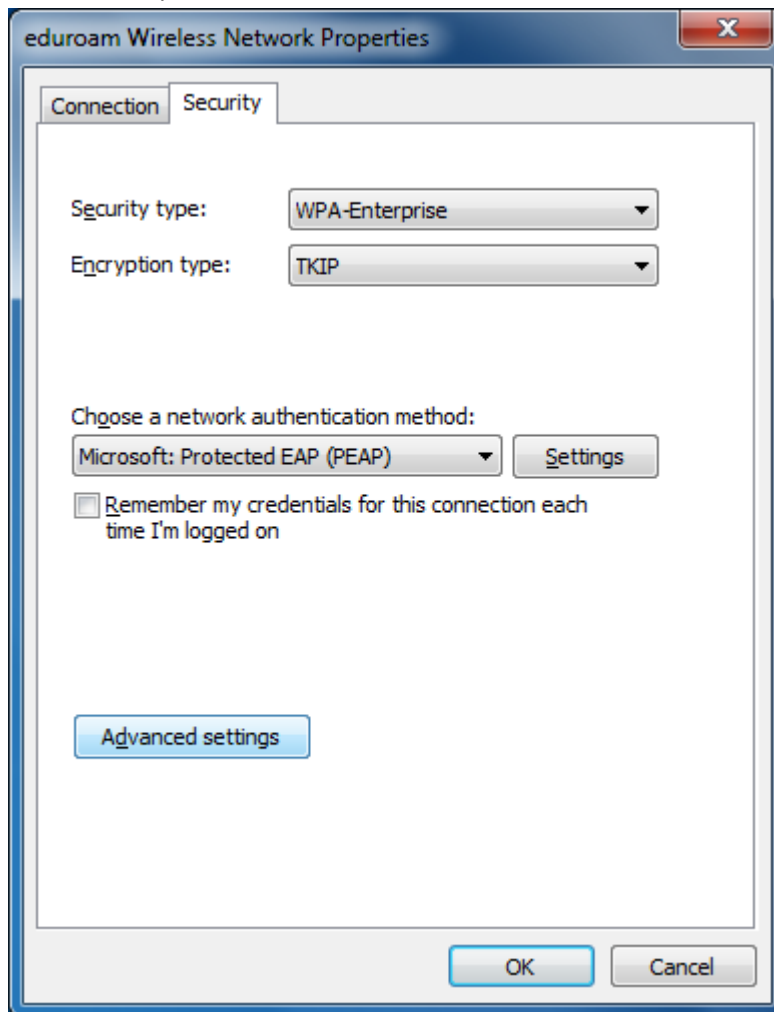
18. Click on the Security tab.
19. Ensure that 'Security type' is set to 'WPA-Enterprise'.
20. Ensure that 'Encryption type' is set to 'TKIP'.
21. Ensure the 'Choose a network authentication method' is set to 'Microsoft Protected EAP (PEAP)'.
22. Un-tick the box marked 'remember my credentials for this connection each time I'm logged on'.
23. Click on the Settings button
24. Un-tick the 'Validate server certificate' and "Enable Fast Reconnect" boxes

25. Under 'Select Authentication Method', select 'Secured password (EAP-MSCHAP v2)'. Your settings should resemble the image below:

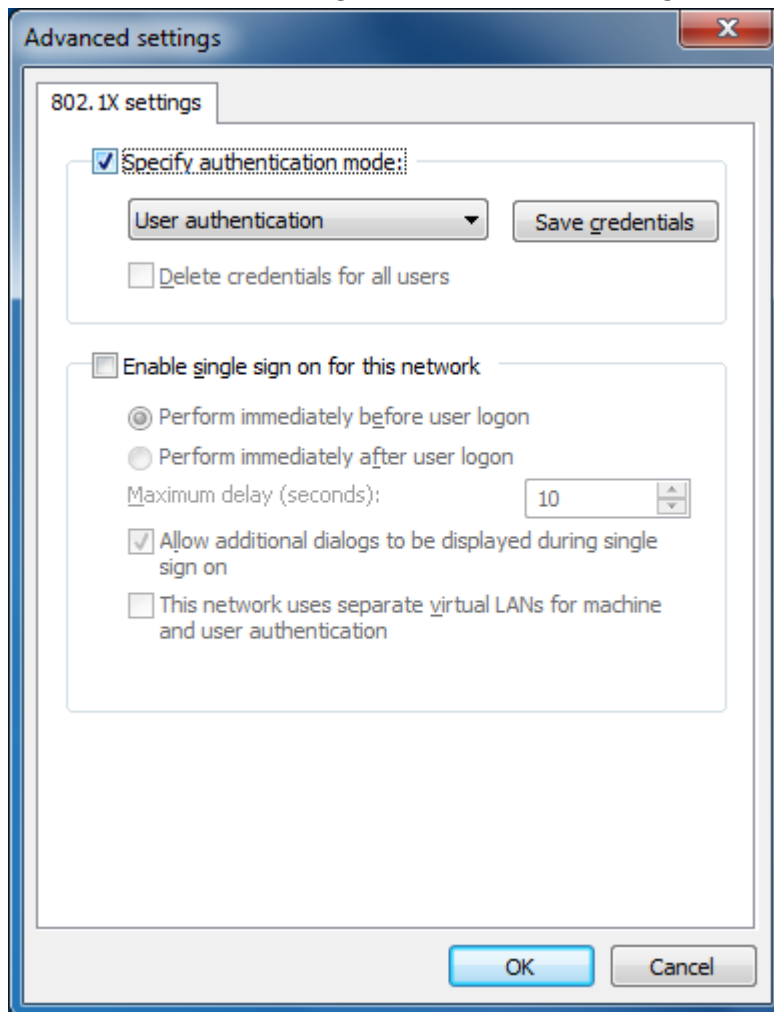


26. Click on the Configure... button.
27. Un-tick the 'Automatically use my Windows logon name and password (and domain if any)' option.

28. Click OK on the dialog box to you return to the 'Security' Tab on the 'eduroam Wireless Network Properties' box as shown below:



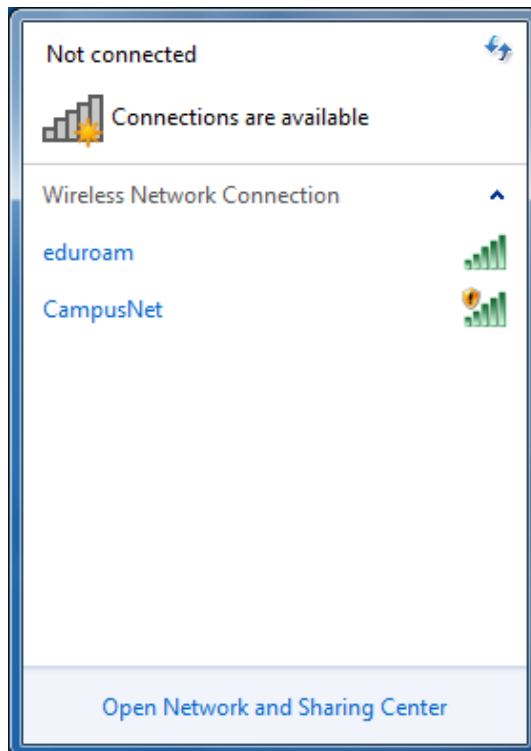
29. Click the 'Advanced settings' button tick 'specify authentication mode' and chose 'user authentication'. Your settings should resemble the image below:



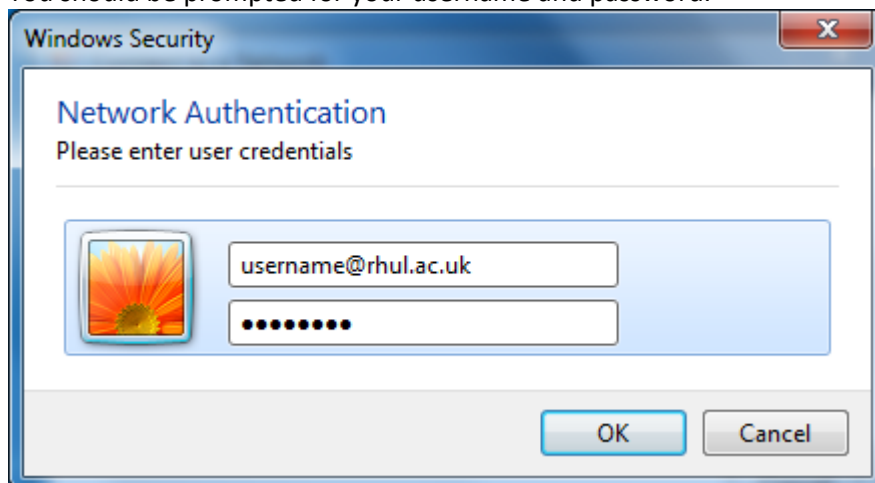
30. Click OK in the two open dialogue boxes to finish

Part 2: Connecting to Eduroam

1. Click on the wireless connection indicator in the bottom right hand corner of your screen this should show you a list of available wireless networks. If you are in range eduroam will be available from this list as shown below:



2. Pick eduroam from the list and click connect
3. You should be prompted for your username and password.



Please type your username in the following configuration:

username@rhul.ac.uk

Do not type your email here. For example if your email address is name.surname.2011@live.rhul.ac.uk, you would still type wxyz123@rhul.ac.uk

4. Click OK , and you should be connected to the Eduroam network.