

ROYAL HOLLOWAY 100

Report



Date:

Thursday 21st March 2024



Panellist Attendance:

30%

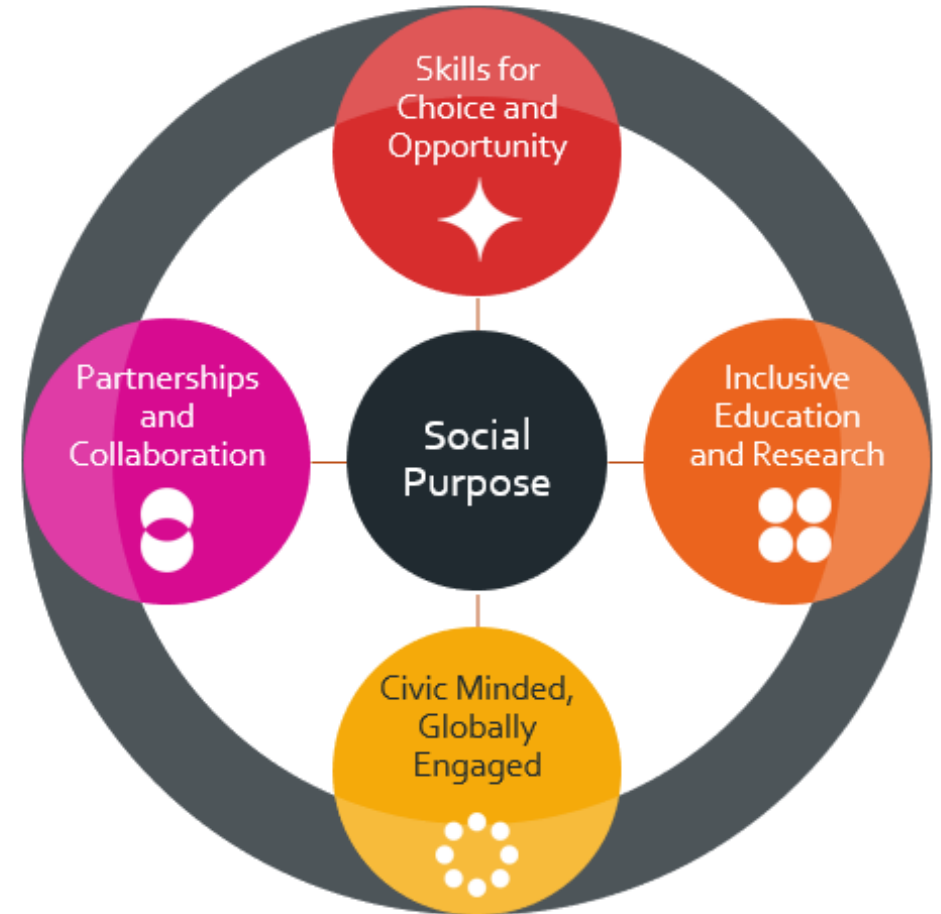


Departments in Attendance:

**Student Engagement, Internal Communications,
Strategic Planning, Careers, Volunteering, Student
Journey, Performing and Digital Arts**

Discussion Topic 1 – Our RH2030s Strategy

For the first topic of this panel, panellists analysed the first three draft ambition statements for the RH2030s strategy: Inclusive education and research; Civic minded, globally engaged, and Partnerships and collaboration. Panellists worked with industry experts to co-design these ambitions, investigating their responses to the current draft statement and looking forward to how this would be implemented in the 2030s.



Panellists informed the university that...

- The language used in the ambition statements sounded like 'buzzwords'.
- The statement for Inclusive Education and Research focused more on research rather than education. Whilst research is integral to the university, more equal focus needs to also be given to education which is a large part of a student's academic experience.
- Panellists liked the the bold use of language which gave the ambitions a sense of confident authority and decisiveness.
- The language used in the Civic minded, Globally engaged statement is at times 'overwhelming' and needs to better explain the intricacies of the ambition.



Panellists therefore suggested...

- To curate a truly inclusive research and teaching environment, assessments and teaching methods need to be made more accessible and evolve with technology and a changing student body. It is important for methods to change and adapt to move 'with the times.'
- It is important to build relationships with the local community and to foster a sense of belonging within Egham and Englefield Green, perhaps by hosting events for local residents and inviting them to visit the grounds.
- Regarding the Partnership and Collaboration ambition,
- A company's ethics as well as reputation should be considered when building partnerships. It is important that their values align with our own.
- Establish greater connections with other London universities with the option for intercollegiate study.



Next steps

Over the next couple of weeks, the leads for each ambition will review the RH100 responses and incorporate it into the final versions which will be approved by Executive Board in May. RH100 panellists may like to know that alongside the ambitions, there will be a set of objectives which will focus on what we aim to deliver to meet each ambition. The input from RH100 about the future more broadly will also be fed into the final development of the strategy and used as the team turn their attention to an implementation plan.



Appendix

Inclusive education and research

1. The draft ambition statement contains our ideas so far for this topic. What do you like about it? What could we improve/clarify? What is missing?

- Focus on inclusivity and research
- Inclusivity relates to staff as well as students
- Lack of specificity 'buzzwords'
- Research heavy – on every paragraph, feel that teaching is secondary to research
- Not clear on what inclusive research actually is
- Bit broad brush – doesn't explain 'how'

2. Imagine you are studying at Royal Holloway in 10 years' time or mentoring a RHUL student, what things would you expect to see happening here to create an inclusive research and teaching environment?

- More collaboration cross industry
- More exposure to alumni
- Modernize content
- Implementing feedback being given
- Technology improvement, wider infrastructure

Appendix

Civic minded, globally engaged

1. The draft ambition statement contains our ideas so far for this topic. What do you like about it? What could we improve/clarify? What is missing?

- More connection to the community
- Like Volunteering Hub offering more opportunities
- How do undergraduates fit into the 'global vision'?
- A bit overwhelming – too much but not proactive
- More social interaction

2. Imagine you are studying at Royal Holloway in 10 years' time or mentoring a RHUL student, what things would you expect to see happening here to make us more civically and globally engaged?

- How will students use AI in their academics?
- Degree more skill oriented.
- Global alumni network - try to build relationships with mentors from the same country/region
- Better relationships with the local community

Partnerships and collaboration

1. The draft ambition statement contains our ideas so far for this topic. What do you like about it? What could we improve/clarify? What is missing?

- It is concise
- How to engage global alumni network – maybe give an incentive
- Promote more use of other uni resources e.g., libraries (UoL)
- Buzzwords

2. Imagine you are studying at Royal Holloway in 10 years' time or mentoring a RHUL student, what types of partners would you expect us to be working with? How should we decide whether a potential partner is a suitable choice for Royal Holloway?

- Small business charities
- Large businesses like Microsoft and Tesla
- Establish partnerships with other UoL schools – UCL, KCL etc.
- Outreach programmes for young people