

Disability & Dyslexia Services Student Advisory & Wellbeing

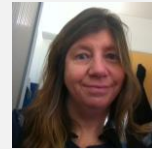


ROYAL
HOLLOWAY
UNIVERSITY
OF LONDON



Julie Wright

Head of Disability & Dyslexia
Services



Jackie Knowles

Academic Adviser



Mona Khatibshahidi

Academic Adviser



Fiona Lambie

Study Skills Tutor



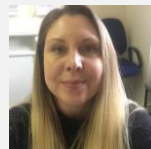
Bethany Gale

Mental Health Adviser &
Specialist Mentor



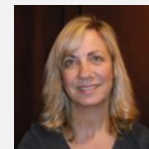
Susan Jewitt

Disability & Dyslexia Adviser



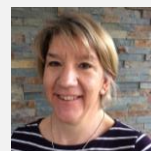
Emilie Titterrell

Disability & Dyslexia Adviser



Nickie Webb

Disability & Dyslexia Adviser



Fenella Attewell

Disability & Dyslexia Services
Administrator