

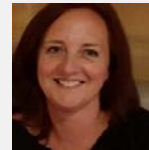
Student Wellbeing Student Advisory & Wellbeing



ROYAL
HOLLOWAY
UNIVERSITY
OF LONDON



Lee Fellows
Head of Student Wellbeing



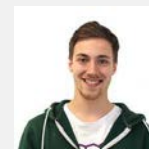
Kate Corti
Wellbeing Adviser



Susan Eastburn
Wellbeing Adviser



Emma Stanley
Wellbeing Adviser



Clement Jones
Community Support
Co-ordinator

