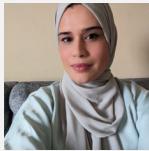


Counselling & Mental Health

Supporting you



ROYAL
HOLLOWAY
UNIVERSITY
OF LONDON



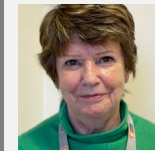
Meena Pervez

Head of Counselling & Mental Health



Dee Raja

Counsellor



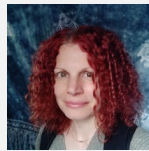
Pat Simpson

Counsellor



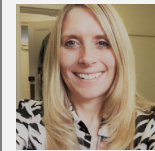
Rianna Breen

Mental Health Practitioner



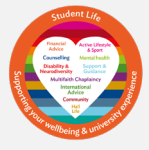
Jo Lee

Mental Health Practitioner



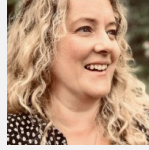
Jane Gittins

Mental Health Practitioner



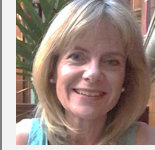
Sal Miah

Counselling Caseworker



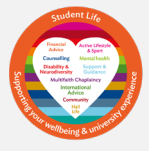
Caroline Hambledon

Counselling Caseworker



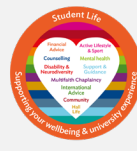
Karen Macmillan

Counselling Caseworker



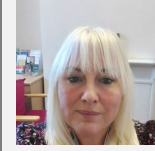
Victoria Turton-Blyth

Counselling Caseworker



Jacqui Hames

Counselling Caseworker



Letitia Green

Counselling Caseworker

Counselling & Mental Health

Supporting you



ROYAL
HOLLOWAY
UNIVERSITY
OF LONDON



Barry Lee

Trainee Counsellor



Caroline Roopun

Mental Health & Wellbeing
Supervisor



Vacancy

Counselling Supervisor



Faiza Akram

Counselling Co-ordinator

